

A visual summary of the 2021 learning series as part of the women's political participation and leadership

Community of Practice

Papua New Guinea

About the Learning Series

In 2021, UN Women, under the Women Make the Change programme, hosted an online learning series on women's political participation and leadership (WPPL).

The online learning series was held as part of the WPPL Community of Practice, which brings together academia, government, civil society and development partners working to support women's leadership in Papua New Guinea and across the Pacific.

The WPPL Community of Practice provides an avenue for networking and cross-learning to promote enhanced collaboration among its members.

The aim of the learning series was for Community of Practice members to both share and learn more about recent research findings covering a range of topics including women's leadership pathways, violence against women in politics, women's inclusion in the Bougainville post-referendum process, the upcoming national election, the attempts made to introduce reserved seats for women and the challenges experienced by women in local level government.

This report provides a graphic summary of the presentations made over the course of the 2021 online learning series.

The Speakers



Geejay Milli
University of Papua New Guinea

Geejay Milli is a lecturer on political science at the University of Papua New Guinea. She is PhD Candidate at the Australian National University with a research focus on women's political participation and security in Papua New Guinea and the Pacific.



Oliver Green
International Foundation for Electoral Systems

Oliver Green is the head of the International Foundation for Electoral System (IFES) office in Bougainville. As Senior Election Management Advisor to the Office of the Bougainville Electoral Commissioner (OBEC) since 2018, he has been deeply involved in electoral events in Bougainville including the recent Community Government elections. He is from Oxford in the UK.



Jyoti Nair
International Foundation for Electoral Systems

Jyoti Nair is a Public Awareness Officer with the International Foundation for Electoral Systems (IFES) in Papua New Guinea. She supports the Information and Community Awareness Branch (ICAB) in the PNG Electoral Commission. Jyoti has conducted analyses on the impact of past voter awareness strategies in PNG and previously worked with EMTV. Jyoti is from New Zealand.



Michael Kabuni
Australian National University

Michael Kabuni is a PhD candidate in the Department of Pacific Affairs at the Australian National University. Previously, he was a lecturer in the Political Science Department at the University of Papua New Guinea. He provides regular commentary to online and print media on politics in PNG.

The Speakers



Geraldine Valei
Plan International

Geraldine is the WASH GESI Coordinator with Plan International in the Autonomous Region of Bougainville. Previously, Geraldine served as the Executive Officer for the Bougainville Women's Federation (BWF), where she coordinated a Women in Leadership Project supported by IWDA for four years. Geraldine is from Bougainville.



Emily Ellis
International Women's Development Agency

Emily Ellis is Programme Manager with IWDA, where she manages programmes with women's rights organisations in PNG and the Solomon Islands on women's leadership, gender-based violence, women's economic empowerment and climate justice. She is from Melbourne in Australia.

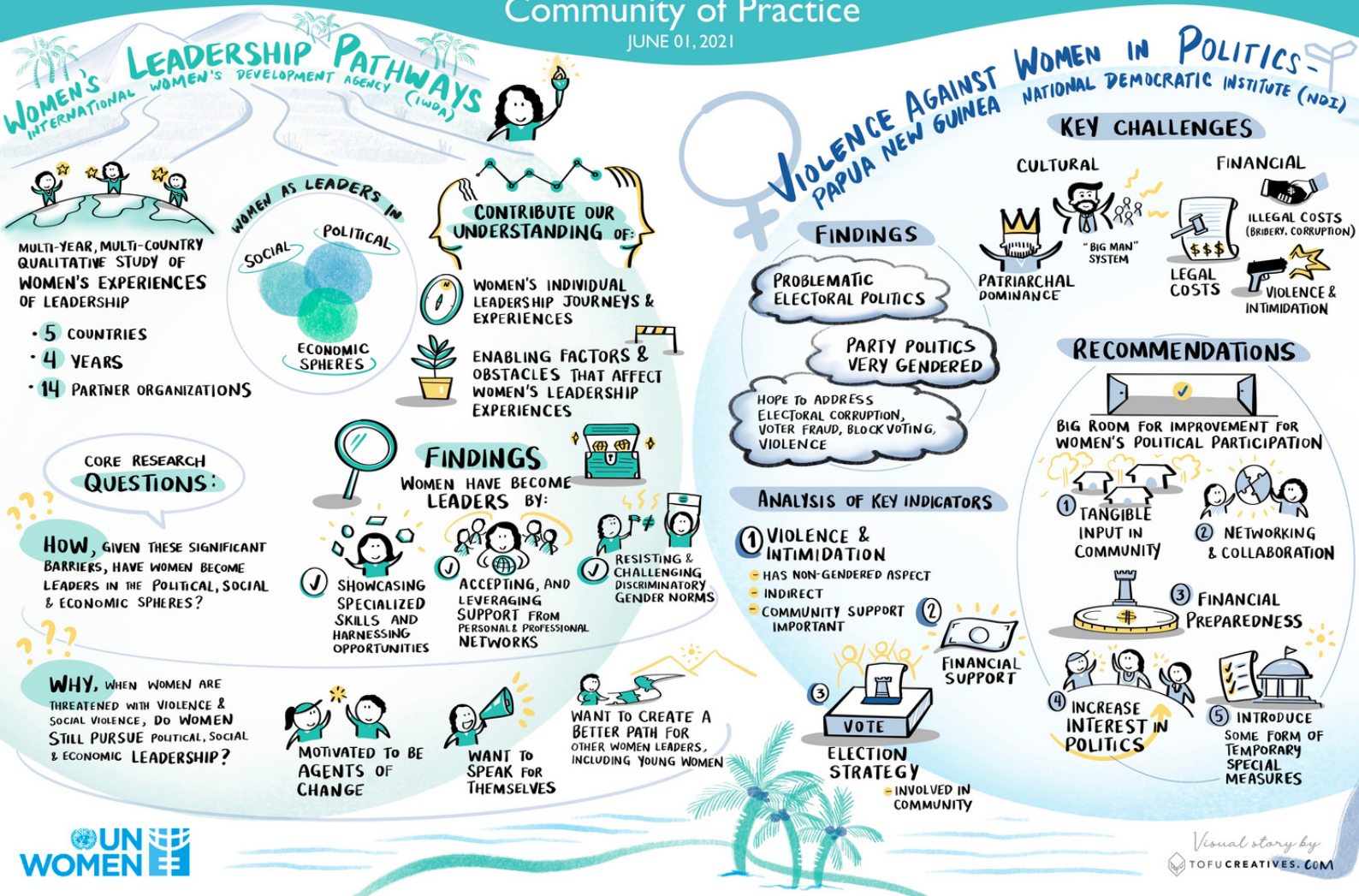


Ancuta Hansen
National Democratic Institute

Ancuta Hansen is Senior Director for the Pacific Islands with the National Democratic Institute. She has worked on programmes aimed at strengthening political parties, legislatures and civil society organisations in the Middle East and North Africa, Eastern Europe and Central America. She has first-hand experience in politics from her home country of Romania.

Women's Leadership and Political Participation Community of Practice

JUNE 01, 2021



Visual story by TOFU-CREATIVES.COM



Women's Pathways to Leadership: Our pathways, our voice International Women's Development Agency. 2020.

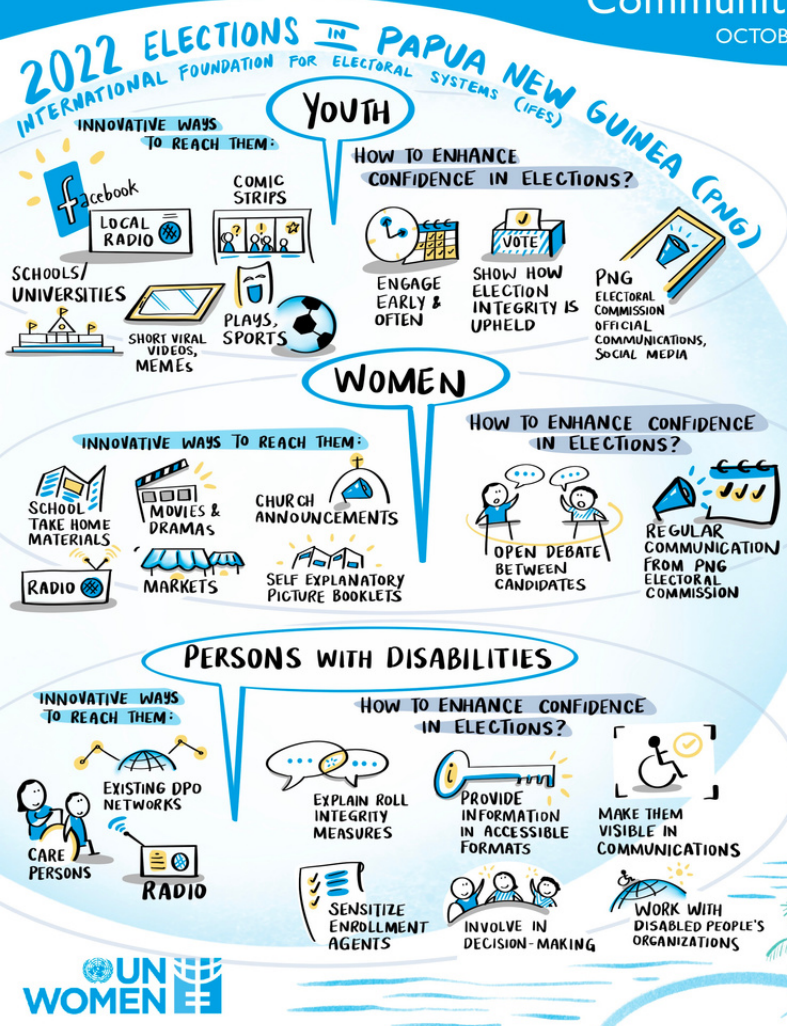
Violence Against Women in Politics in Fiji, Papua New Guinea and Solomon Islands NDI and femLINKpacific. 2021.

The Women's Pathways to Leadership report produced by IWDA captures the experiences of 121 women leaders from Cambodia, Papua New Guinea, Myanmar, Solomon Islands and Timor-Leste over a period of four years.

The Violence Against Women in Politics report produced by NDI and femLINKpacific, with funding from USAID, features data gathered from 29 women from political parties and civil society, as well as 12 men from political parties, academia, and civil society across three countries in the Pacific.

Women's Leadership and Political Participation Community of Practice

OCTOBER 29, 2022



Survey findings on voter needs for the 2022 national election. IFES and PNGEC. 2022.

The survey findings shared by IFES were gathered in partnership with the PNG Electoral Commission. The findings explore the barriers, information sources and likelihood of voting among women, youth and persons living with disabilities.



Women's inclusion in the Post-Referendum consultations between the National Government of Papua New Guinea and the Autonomous Bougainville Government. NDI. 2021.

The qualitative assessment report produced by NDI with support from USAID provides women's groups and civic actors with an overview of the structure, challenges and inclusiveness of the post-referendum consultation process.

Visual story by TOFU-CREATIVES.COM

INCREASING WOMEN REPRESENTATION IN PNG ATTEMPTS, LESSONS, WAY FORWARD UNIVERSITY OF PAPUA NEW GUINEA

ATTEMPT 1: NOMINATED MEMBERS

- REQUIRES 2/3 MAJORITY VOTE IN PARLIAMENT

ATTEMPT 2: RESERVED SEATS

- 22 RESERVED SEATS FOR WOMEN
- WOMEN MPs ELECTED BY VOTERS

NEW NATIONAL PROPOSAL

5 REGIONAL RESERVED SEATS FOR PNG WOMEN
WEST PAPUA, NEW GUINEA ISLANDS, HIGHLANDS, EAST PAPUA, MOMASE

MAIN CHALLENGE: POLITICAL WILL TO AMEND CONSTITUTION & PASS ENABLING LEGISLATION

NEW PROPOSED: ORGANIC LAW ON INTEGRITY OF POLITICAL PARTIES & CANDIDATES → PARTIES TO ENDORSE 20% WOMEN CANDIDATES

HOW TO WIN AS A FEMALE CANDIDATE

LIVING WITH THE COMMUNITY/ CONSTITUENCY

PROVIDING LEADERSHIP (NON-TRADITIONAL)

SUPPORT FROM MALE COUNTERPARTS

GENDER CHALLENGES IN COMMUNITY GOVERNMENT (CG) INTERNATIONAL FOUNDATION FOR ELECTORAL SYSTEMS (IFES)

FEMALE LEADERSHIP CHALLENGES

LACK OF SUPPORT FROM COMMUNITY, CHALLENGES IN WORKING WITH THE AUTONOMOUS BOUGAINVILLE GOVERNMENT (ABG), LACK OF TRANSPORTATION TO MEETINGS, NEED FOR MORE TRAINING ON THEIR ROLE, CHALLENGES COMMUNICATING THE WORK OF CG, ADDRESSING PROBLEMS IN THE COMMUNITY

88% OF MALE CG LEADERS STRONGLY AGREE THAT WOMEN SHOULD SERVE IN CGs
BUT ONLY 39% STRONGLY AGREE THEY SHOULD SERVE AS CG CHAIR

ATTITUDE TOWARDS TRAININGS: 73% OF RESPONDENTS SAY TRAININGS HELPED THEM A GREAT DEAL

NEED FOR GENDER SENSITIZATION FOR GATEKEEPERS

GOVERNANCE & LEGAL, LEADERSHIP SKILLS, COMMUNICATION SKILLS, FINANCE/BUDGET



Increasing women's representation in PNG: Attempts, lessons, way forward University of Papua New Guinea. 2021.

During his presentation, Michael Kabuni provided an overview of the historical attempts to introduce reserved seats for women in the national Parliament of PNG, the new proposal discussed by the Government and findings from the 2022 by-election held in Port Moresby.

Gender challenges in Community Government. IFES. 2021.

The research findings shared by IFES were gathered in partnership with the Autonomous Bougainville Government Department of Community Government by soliciting inputs from 101 male and 125 female Community Government leaders. The findings specifically explore the challenges facing women leaders.

The WPPL COP Learning Series is part of the Women Make the Change programme. Women Make the Change is a 4-year programme focused on women's political participation and leadership, implemented by UN Women in partnership with the Government of Papua New Guinea, the Autonomous Bougainville Government and UNDP. The programme is funded by the Government of Australia and the Government of New Zealand.

We would like to thank our partners and donors for their continued support and commitment to advancing women's political participation in Papua New Guinea.

Contact

UN Women
Elly Kale, WMC Programme Coordinator,
elly.kale@unwomen.org

UN Women
Gabrielle John, WMC Technical Specialist,
gabrielle.john@unwomen.org

